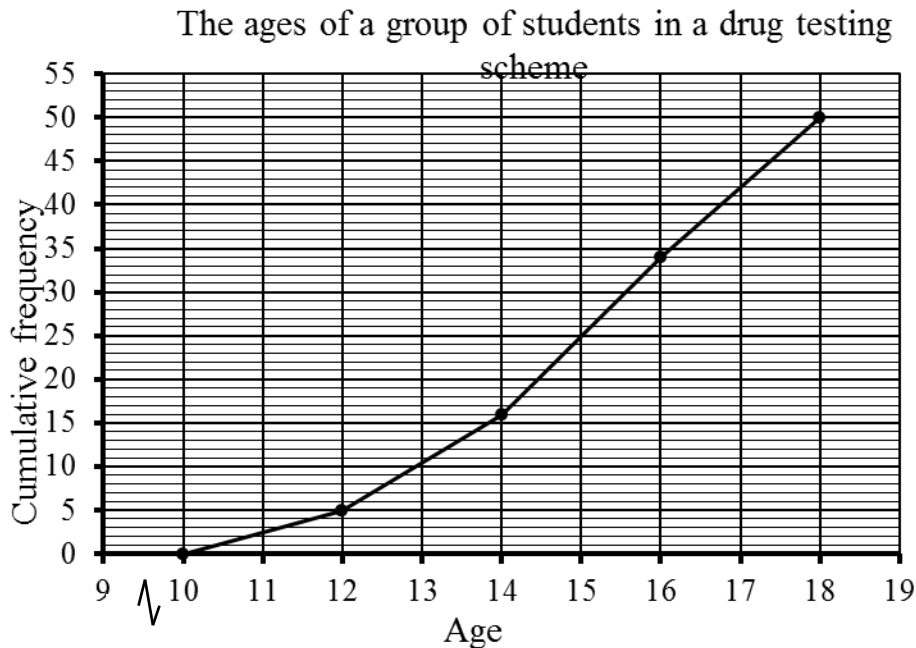


TB(2A) Ch. 6 More about Statistical Diagrams

Multiple Choice Questions

1. [13-14 F.3 Final Exam, #17]

The following cumulative frequency polygon shows the age distribution of a group of students in a drug testing scheme.



Find the median age of the students.

- | | |
|--------------|--------------|
| A. 13 | B. 14 |
| C. 15 | D. 16 |

2. [13-14 F.3 Final Exam, #18]

Refer to Question 17. Find the 20th percentile.

- | | |
|--------------|--------------|
| A. 12 | B. 13 |
| C. 14 | D. 15 |

3. [14-15 F.2 Final Exam, #12]

The frequency distribution table below shows the ages of 50 flight attendants in Good Hope Airway.

Age	20 - 24	25 - 29	30 - 34	35 - 39
Frequency	x	15	12	5

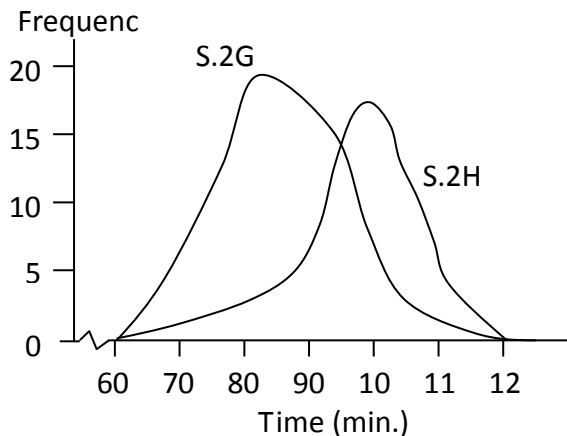
What percentage of the flight attendants have the ages 29 or below?

- | | |
|---------------|---------------|
| A. 30% | B. 34% |
| C. 64% | D. 66% |

4. [14-15 F.2 Final Exam, #18]

Consider the diagram below. Which of the following must be true?

**Time spent on social media per day
by students in S.2G and S.2H**

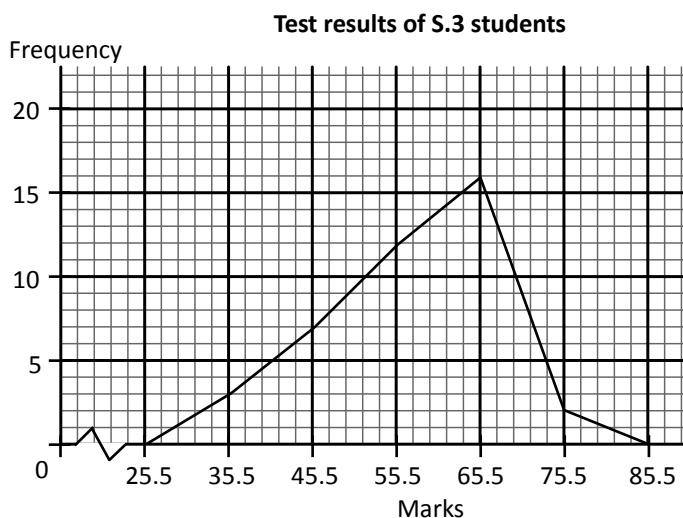


- I. In general, S.2H students spend more time on social media per day than S.2G.
- II. No students in S.2G and S.2H spend less than an hour on social media per day.
- III. The diagram shows two cumulative frequency curves.

- A. I and II only
- B. I and III only
- C. II and III only
- D. I, II and III

5. [14-15 F.3 Final Exam, #10]

The following frequency polygon shows the test results of a group of S.3 students.



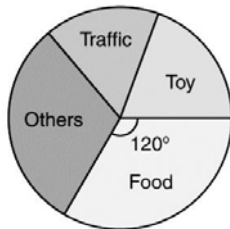
If the passing mark is 60.5, what is the percentage of students who fail the test?

- A. 14
- B. 45
- C. 55
- D. 86

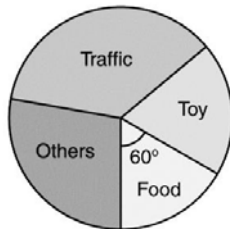
6. [14-15 F.3 Final Exam, #11]

The pie charts show the monthly expenditures (in \$) of Alice and Ray respectively. Which of the following must be true?

Monthly expenditure
of Ray



Monthly expenditure
of Alice

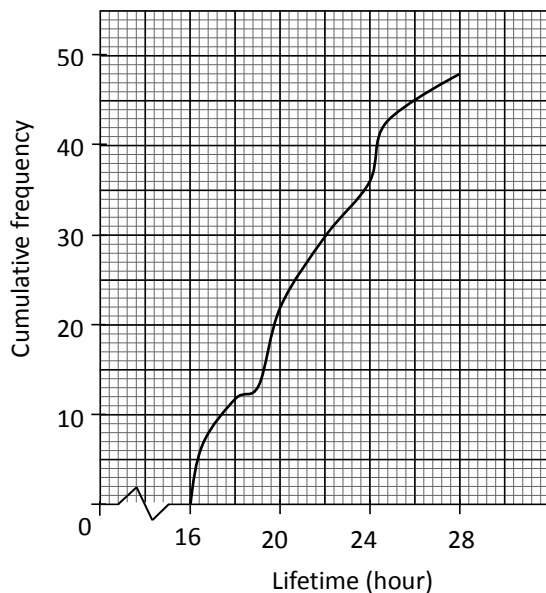


- I. Alice spends more money on food than Ray.
 - II. The monthly expenditure of Alice is more than that of Ray.
 - III. Ray earns more than that of Alice.
- A. I only
 - B. I and II only
 - C. I, II and III
 - D. None of the above

7. [14-15 F.3 Final Exam, #26]

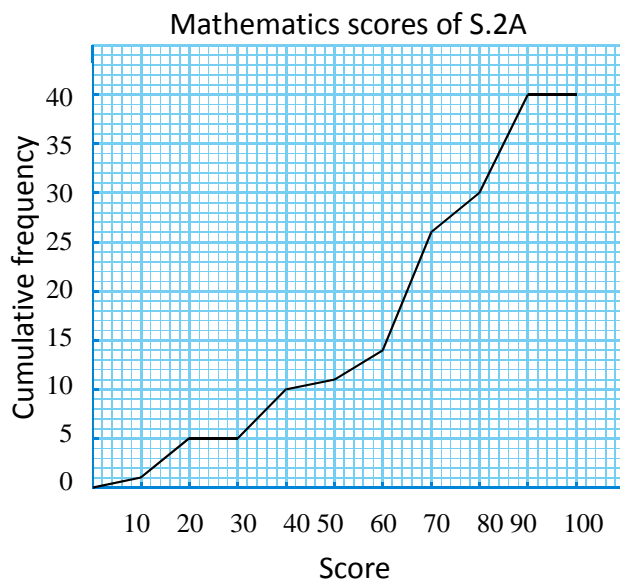
The cumulative frequency curve shows the lifetimes (in hour) of some electronic toys. Which of the following must be true?

Lifetimes of some electronic toys



- I. The difference between the upper quartile and the lower quartile is 8 hours.
 - II. The 75th percentile is 24 hours.
 - III. The median is 22 hours.
- A. I and II only
 - B. I and III only
 - C. II and III only
 - D. I, II and III

The cumulative frequency polygon shows the scores of S.2A students in a Mathematics test. Study the graph and answer questions #8 and #9.



8. [15-16 Mid-year Exam, #7]

Find the median score in the Mathematics test.

- A. 20 B. 45
C. 50 D. 65

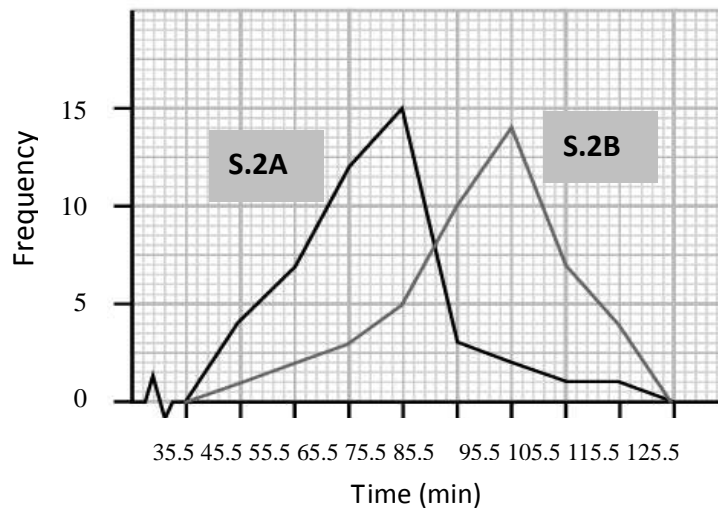
9. [15-16 Mid-year Exam, #8]

Find the 40th percentile from the cumulative frequency polygon.

- A. 10 B. 16
C. 62 D. 90

10. [15-16 Mid-year Exam, #16]

Revision Time of S.2A and S.2B students



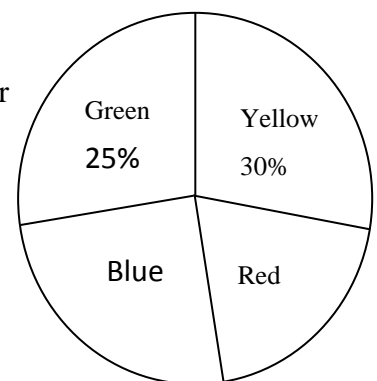
Referring to the above figure, which of the following is/are true?

- I. The figure shows two cumulative frequency polygons.
- II. The majority of S.2B students spend less time on revision than S.2A students.
- III. 14 S.2B students spend 90.5 minutes to 100.5 minutes on revision.

- A. II only
- B. III only
- C. I and II only
- D. II and III only

11. [16-17 Mid-year Exam, #9]

The pie chart below shows the distribution of four types of colour paper on the shelf. If there are 300 pieces of blue paper, how many pieces of red paper are there?



- A. 200
- B. 240
- C. 300
- D. 360

12. [16-17 Mid-year Exam, #10]

The table below shows the weights of 50 people.
The class mark of the last interval is

- A. 65 kg. B. 67 kg.
C. 67.5 kg. D. 69.5 kg.

Weight(kg)	Frequency
40 – 44	5
45 – 49	8
50 – 54	13
55 – 59	11
60 – 64	11
65 – 69	2

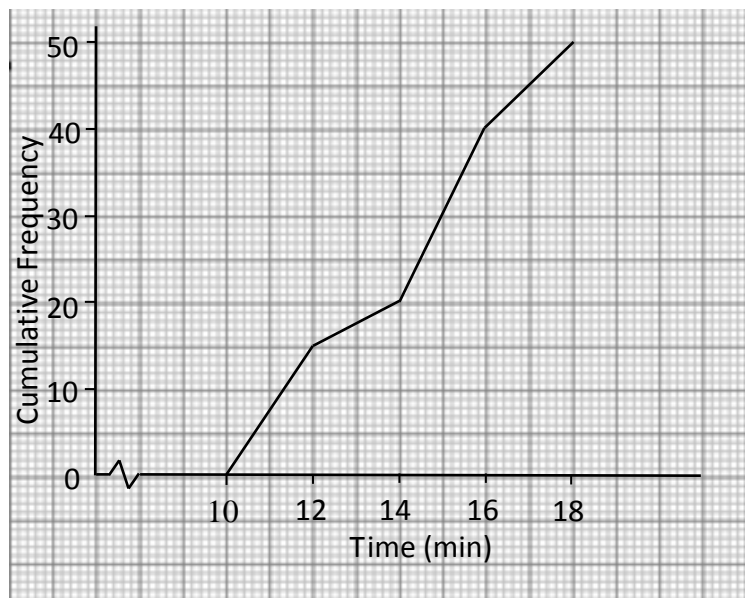
13. [16-17 Mid-year Exam, #19]

The cumulative frequency polygon below shows the time (in minutes) taken by a group of kids to complete a game.

The time taken by a group of kids to complete a game

How many kids spent 12 minutes or more to complete the game?

- A. 5
B. 15
C. 25
D. 35



~End~